



REIN & GROSSOEHME
COMMERCIAL REAL ESTATE

CENTRAL SQUARE

NEC Van Buren St. & Central Ave.
13370 - 13390 W. Van Buren St, Goodyear, AZ

FOR LEASE

1,120 SF Available
Facing Van Buren St.

1,682 SF Suite Available

Excellent Signage

Near Goodyear Airport

Strong Tenant Mix

High Activity Center

Flexible Rates



8767 E. Via de Ventura
Suite 290
Scottsdale, AZ 85258
RGcre.com

KEVIN ROESSLER

480.214.9425
Kevin@RGcre.com



REIN & GROSSEHME
COMMERCIAL REAL ESTATE

CENTRAL SQUARE

NEC Van Buren St. & Central Ave.

13370 - 13390 W. Van Buren St, Goodyear, AZ

FLOOR PLANS

Building 13370

Suite 103: 1,120 SF
Tile Flooring
Former Nutrition Space

Building 13390

Suite 101-103: 4,582 SF
• Available with notice

Suite 104: 1,682 SF
End Cap
Strong Glass Lining



The information contained herein has been secured from sources we believe to be reliable, but we make no representations or warranties, expressed or implied, as to the accuracy of the information. References to square footage or age are approximate. Interested parties must verify this information and bear all risk for inaccuracies.

8767 E. Via de Ventura
Suite 290
Scottsdale, AZ 85258
RGcre.com

KEVIN ROESSLER

480.214.9425
Kevin@RGcre.com

CENTRAL SQUARE

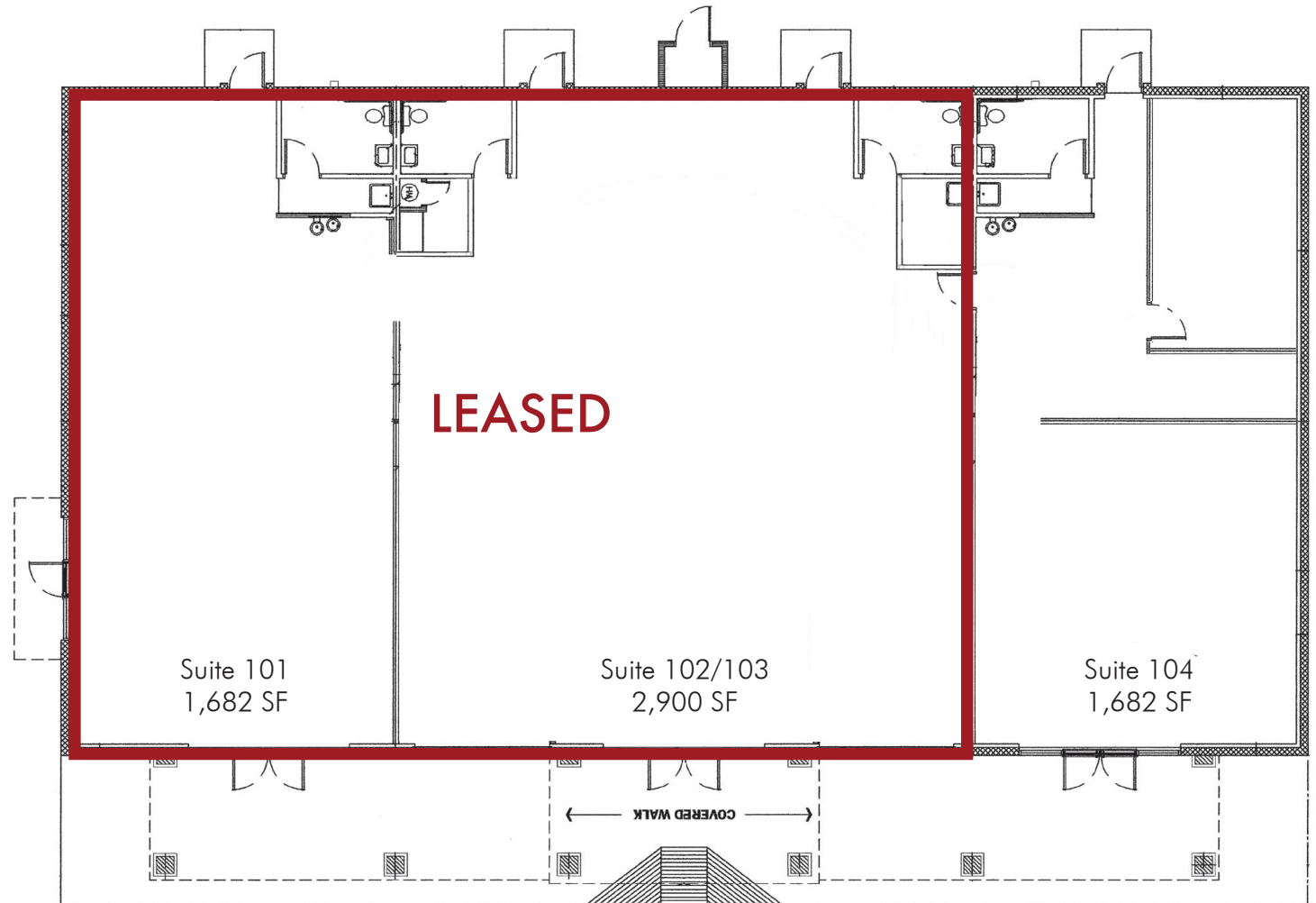
NEC Van Buren St. & Central Ave.
13370 - 13390 W. Van Buren St, Goodyear, AZ

FLOOR PLANS

Building 13390

Suite 101-103: 4,582 SF
• Available with notice

Suite 104: 1,682 SF
End Cap
Strong Glass Lining



The information contained herein has been secured from sources we believe to be reliable, but we make no representations or warranties, expressed or implied, as to the accuracy of the information. References to square footage or age are approximate. Interested parties must verify this information and bear all risk for inaccuracies.

8767 E. Via de Ventura
Suite 290
Scottsdale, AZ 85258
RGcre.com

KEVIN ROESSLER

480.214.9425
Kevin@RGcre.com

CENTRAL SQUARE

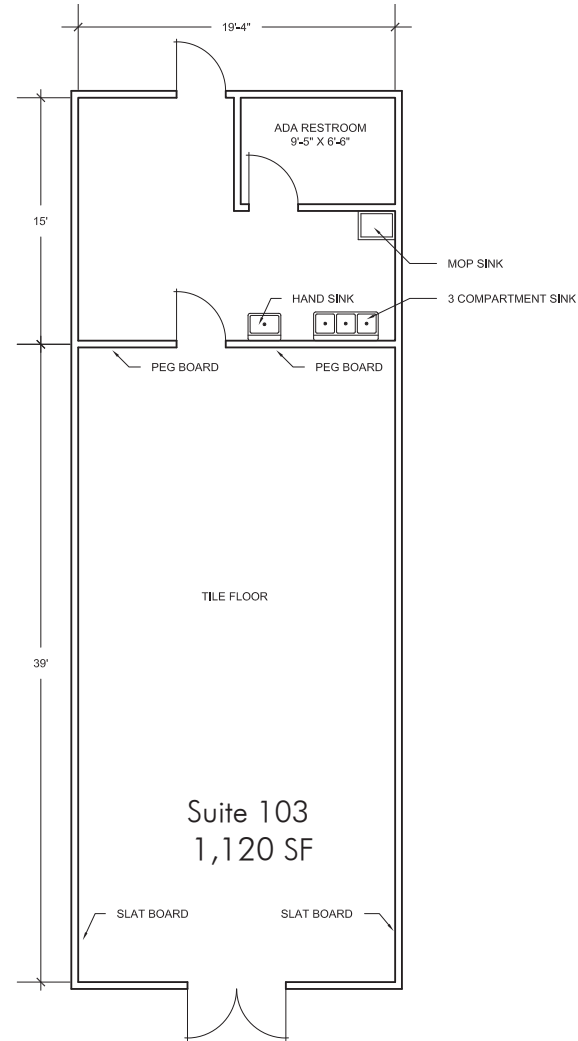
NEC Van Buren St. & Central Ave.
13370 - 13390 W. Van Buren St, Goodyear, AZ

FLOOR PLANS

Building 13370

Suite 103: 1,120 SF
Tile Flooring
Former Nutrition Space

The information contained herein has been secured from sources we believe to be reliable, but we make no representations or warranties, expressed or implied, as to the accuracy of the information. References to square footage or age are approximate. Interested parties must verify this information and bear all risk for inaccuracies.



Approximately to Scale

8767 E. Via de Ventura
Suite 290
Scottsdale, AZ 85258
RGcre.com

KEVIN ROESSLER

480.214.9425
Kevin@RGcre.com



REIN & GROSSEHME
COMMERCIAL REAL ESTATE

CENTRAL SQUARE

NEC Van Buren St. & Central Ave.
13370 - 13390 W. Van Buren St, Goodyear, AZ

FLOOR PLANS

Building 13370

Suite 103: 1,120 SF
Tile Flooring
Former Nutrition Space



The information contained herein has been secured from sources we believe to be reliable, but we make no representations or warranties, expressed or implied, as to the accuracy of the information. References to square footage or age are approximate. Interested parties must verify this information and bear all risk for inaccuracies.

8767 E. Via de Ventura
Suite 290
Scottsdale, AZ 85258
RGcre.com

KEVIN ROESSLER

480.214.9425
Kevin@RGcre.com



REIN & GROSSEHME
COMMERCIAL REAL ESTATE

CENTRAL SQUARE

NEC Van Buren St. & Central Ave.

13370 - 13390 W. Van Buren St, Goodyear, AZ

DEMOGRAPHICS

(2017)

Population Estimates

1 Mile	9,015
3 Mile	77,745
5 Mile	181,621

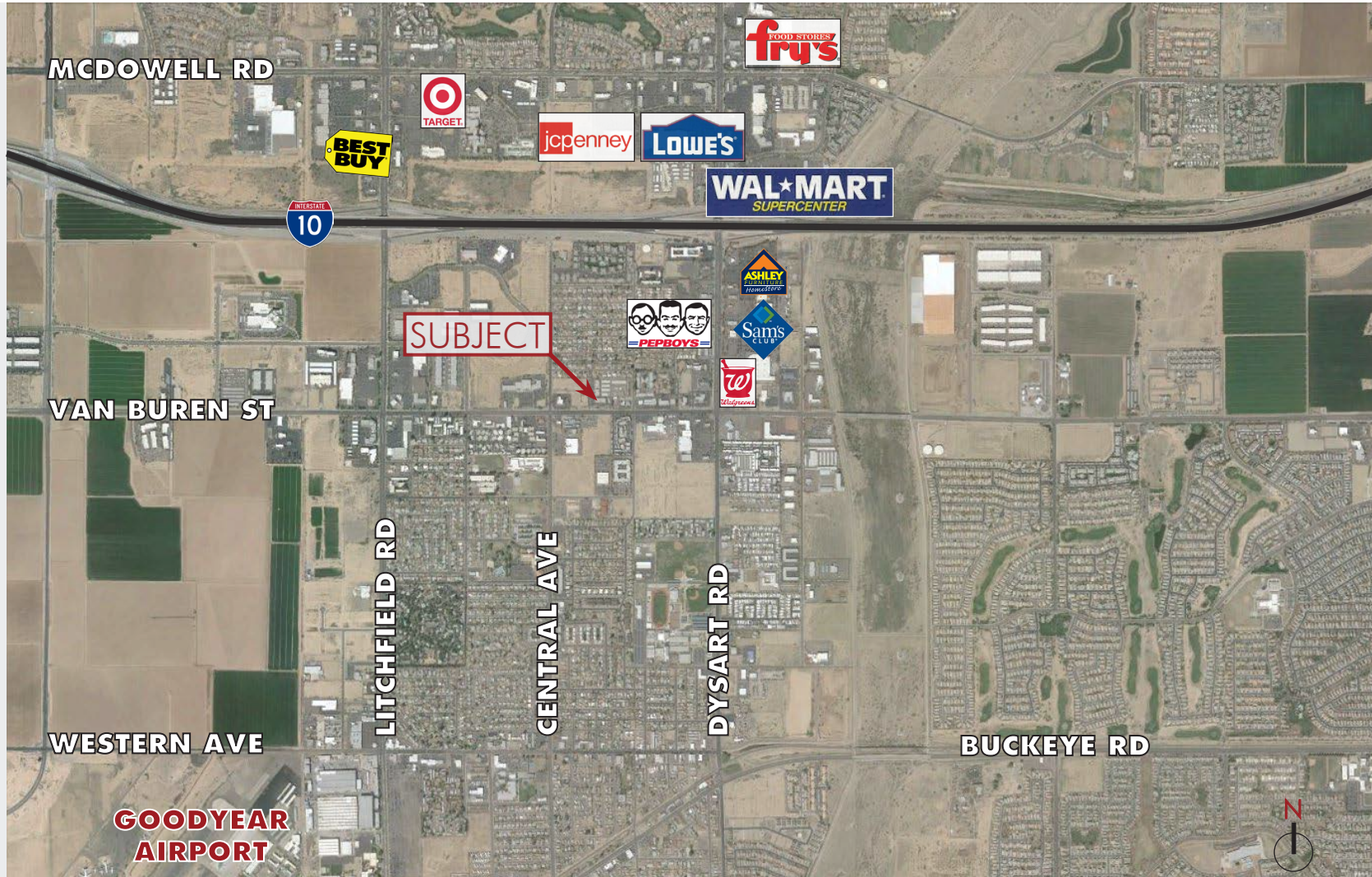
Average Household Income

1 Mile	\$43,133
3 Mile	\$69,742
5 Mile	\$78,290

Households

1 Mile	2,786
3 Mile	25,026
5 Mile	58,834

The information contained herein has been secured from sources we believe to be reliable, but we make no representations or warranties, expressed or implied, as to the accuracy of the information. References to square footage or age are approximate. Interested parties must verify this information and bear all risk for inaccuracies.



8767 E. Via de Ventura
Suite 290
Scottsdale, AZ 85258
RGcre.com

KEVIN ROESSLER

480.214.9425
Kevin@RGcre.com