



# INDUSTRIAL SPACE IN THE SCOTTSDALE AIRPARK

North of 84th St. & Hayden  
15820 N. 84th St, Scottsdale, AZ

## FOR LEASE

Suite 60: ±36,460 SF

Minutes from Loop 101

20' Clear Height

Signature Class A  
Industrial Building

3 Dock High Truck Wells

1 Grade Level Door

Power: 800 Amps

Zoned I-1

Parking 1.7 / 1,000

\$0.89 NNN

The information contained herein has been obtained from sources we believe to be reliable, however, Rein & Grossoehme and its agents have not conducted any investigation regarding these matters and make no warranty or representation expressed or implied regarding the accuracy or completeness of the information. Interested parties need to verify any information that is critical to their decision process and bear all risk for inaccuracies. References to square footage or age are approximate.



8767 E. Via de Ventura  
Suite 290  
Scottsdale, AZ 85258  
RGcre.com

## STEVE GROSSOEHME

480.214.9413  
Steve@RGcre.com

# INDUSTRIAL SPACE IN THE SCOTTSDALE AIRPARK

North of 84th St. & Hayden  
15820 N. 84th St, Scottsdale, AZ

## AVAILABLE SUITE

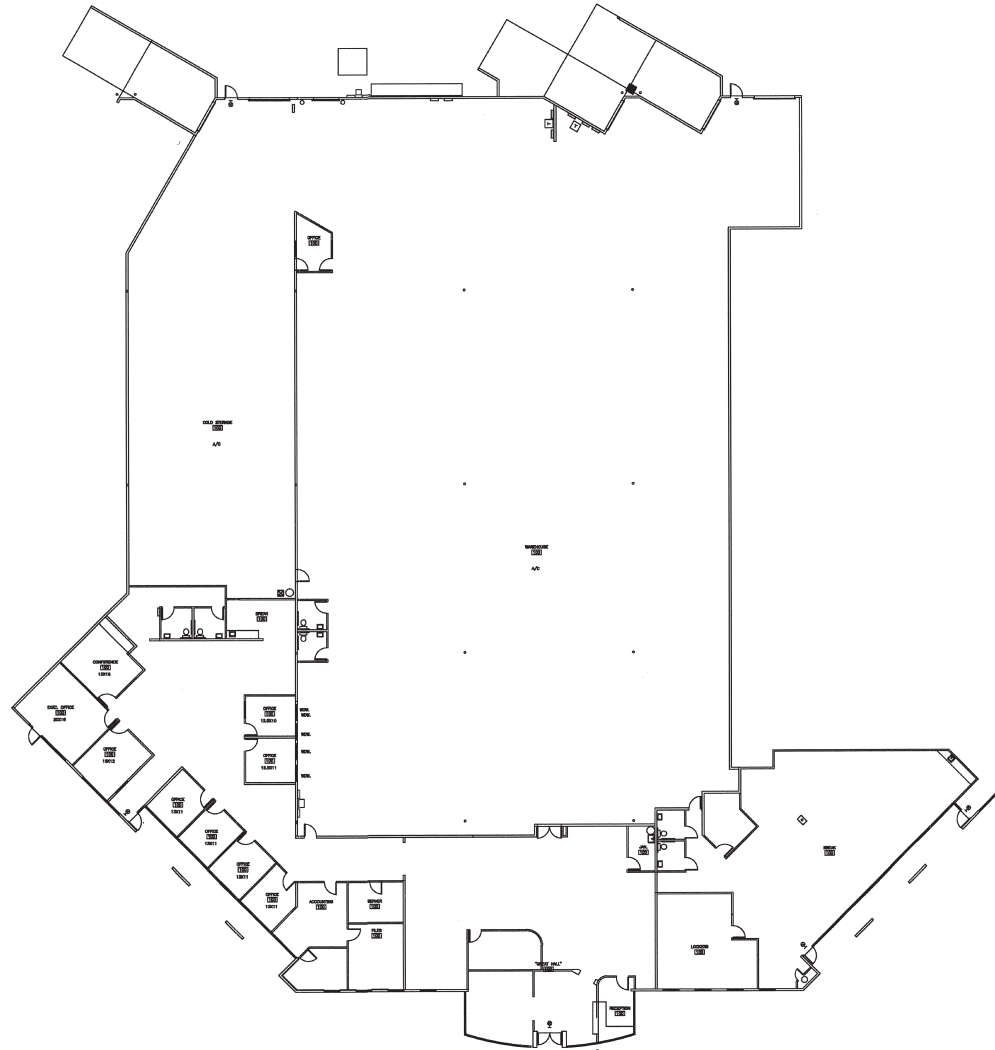
Suite 60: ±36,460 SF

Office: ±11,660 SF

Warehouse: ±24,800 SF

\$0.89 NNN

The information contained herein has been obtained from sources we believe to be reliable, however, Rein & Grossoehme and its agents have not conducted any investigation regarding these matters and make no warranty or representation expressed or implied regarding the accuracy or completeness of the information. Interested parties need to verify any information that is critical to their decision process and bear all risk for inaccuracies. References to square footage or age are approximate.



8767 E. Via de Ventura  
Suite 290  
Scottsdale, AZ 85258  
RGcre.com

**STEVE GROSSOEHME**

480.214.9413  
Steve@RGcre.com





REIN & GROSSOEHME  
COMMERCIAL REAL ESTATE

# INDUSTRIAL SPACE IN THE SCOTTSDALE AIRPARK

North of 84th St. & Hayden  
15820 N. 84th St, Scottsdale, AZ

## FOR LEASE

Suite 60: ±36,460 SF

Minutes from Loop 101

20' Clear Height

Signature Class A  
Industrial Building

3 Dock High Truck Wells

1 Grade Level Door

Power: 800 Amps

Zoned I-1

Parking 1.7 / 1,000

\$0.89 NNN

The information contained herein has been obtained from sources we believe to be reliable, however, Rein & Grosseohme and its agents have not conducted any investigation regarding these matters and make no warranty or representation expressed or implied regarding the accuracy or completeness of the information. Interested parties need to verify any information that is critical to their decision process and bear all risk for inaccuracies. References to square footage or age are approximate.



8767 E. Via de Ventura  
Suite 290  
Scottsdale, AZ 85258  
RGcre.com

## STEVE GROSSOEHME

480.214.9413  
Steve@RGcre.com