



REIN & GROSSOEHME
COMMERCIAL REAL ESTATE

FORMER AUTO BODY SHOP

N/ NEC Central & Southern
5647 S. Central Ave, Phoenix, AZ

FOR SALE

13,061 SF of Land (0.3 acres)

2,025 SF Auto Body Shop

Asking Price: \$275,000

Redevelopment Opportunity

C-2 Zoning, City of Phoenix

Central Ave. Frontage

Charter School Directly East
of Subject Site

Also For Sale (Through
Separate Ownership):
Approx. 1.7 Acres Adjacent
to Subject Site



8767 E. Via de Ventura
Suite 290
Scottsdale, AZ 85258
RGcre.com

PATRICK SHEEHAN

480.214.9405
Patrick@RGcre.com



REIN & GROSSEHME
COMMERCIAL REAL ESTATE

FORMER AUTO BODY SHOP

N/ NEC Central & Southern
5647 S. Central Ave, Phoenix, AZ

DEMOGRAPHICS

(2014)

Population Estimates

1 Mile	20,539
3 Mile	94,985
5 Mile	187,623

Median Household Income

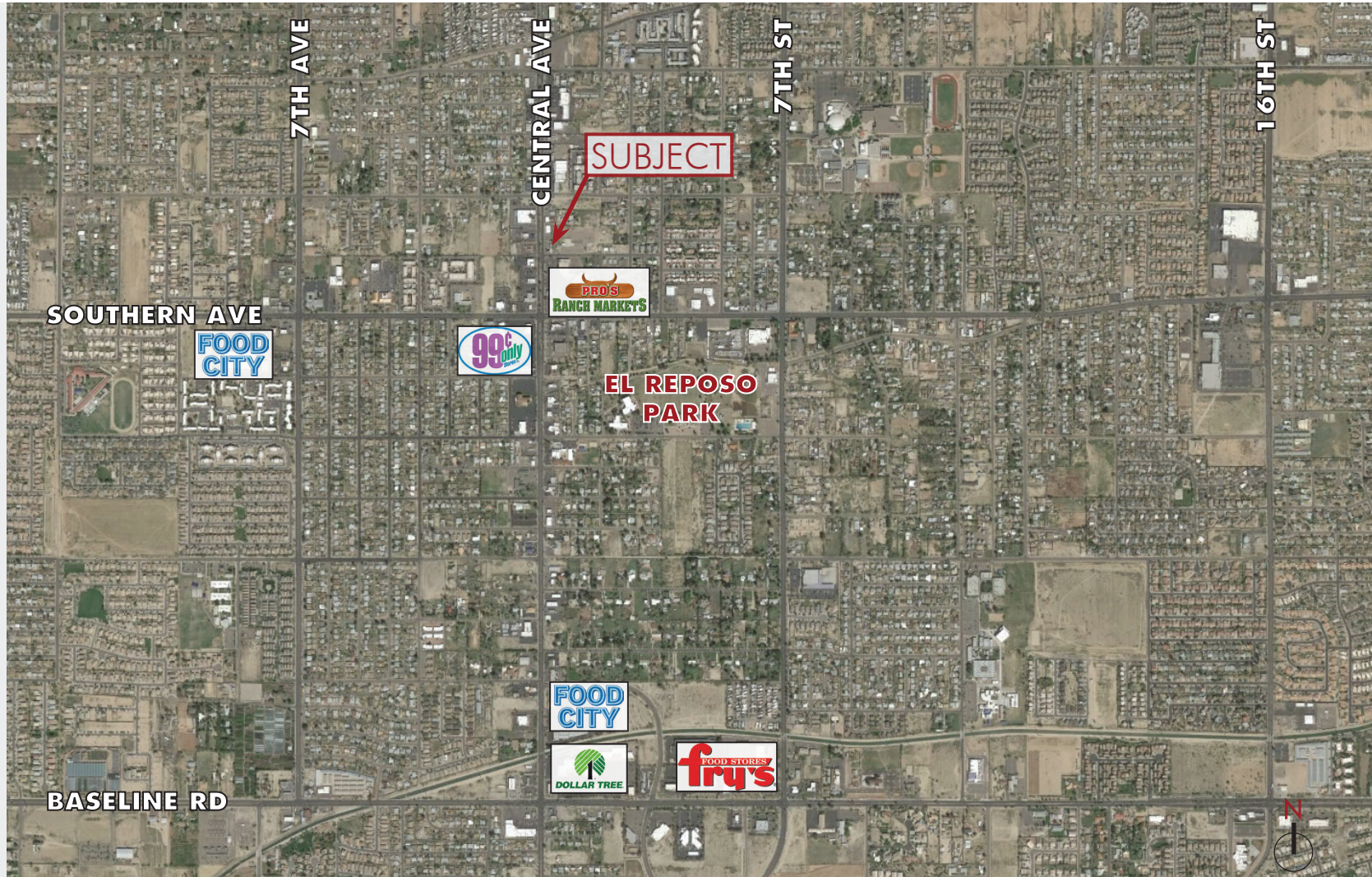
1 Mile	\$32,648
3 Mile	\$37,937
5 Mile	\$33,957

TRAFFIC COUNT

(2014)

Southern Ave	27,658
Central Ave	21,060

The information contained herein has been secured from sources we believe to be reliable, but we make no representations or warranties, expressed or implied, as to the accuracy of the information. References to square footage or age are approximate. Interested parties must verify this information and bear all risk for inaccuracies.



8767 E. Via de Ventura
Suite 290
Scottsdale, AZ 85258
RGcre.com

PATRICK SHEEHAN

480.214.9405
Patrick@RGcre.com