



REIN & GROSSOEHME  
COMMERCIAL REAL ESTATE

## BUCKHORN PLAZA

NEC Main St & Recker Rd  
6030 E Main St, Mesa, AZ

### FOR LEASE

1,300 - 13,181 SF Available

34,800 VPD at Intersection

Less Than a 2 Minute Drive  
to Loop 202

Anchor Tenants Include:  
JoAnn's, Goodwill and  
Walgreens



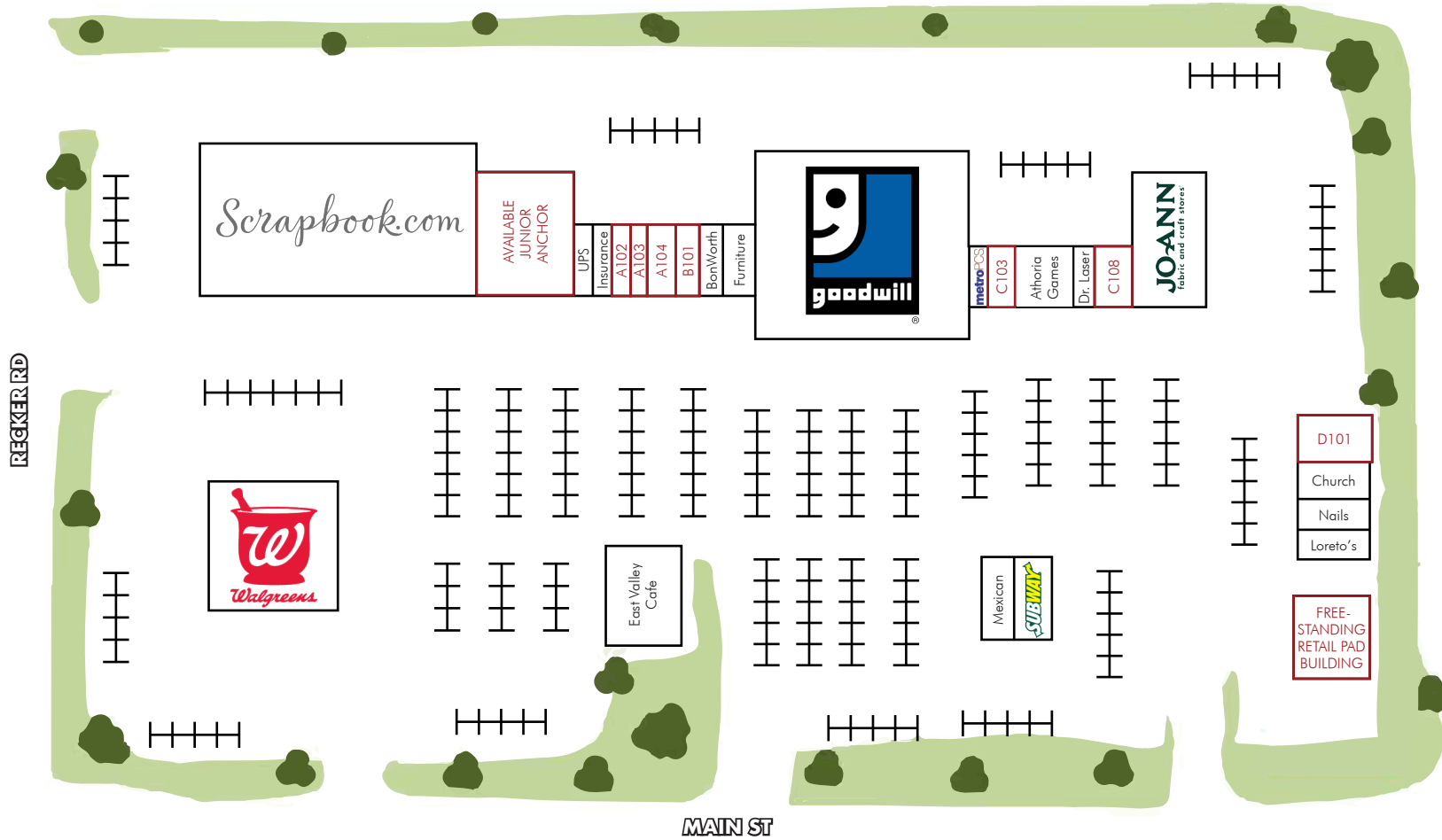
8767 E. Via de Ventura  
Suite 290  
Scottsdale, AZ 85258  
RGcre.com

## JARED LIVELY

480.214.9411  
Jared@RGcre.com

### AVAILABLE SUITES

- Jr. Anchor: 13,181 SF
- Retail Pad: 1,780 SF
- A102: 1,300 SF
- A103: 1,300 SF
- A104: 1,300 SF
- B101: 2,358 SF
- C103: 2,100 SF  
Former Church Space
- C108: 2,786 SF
- D101: 2,000 SF  
Former Laundromat



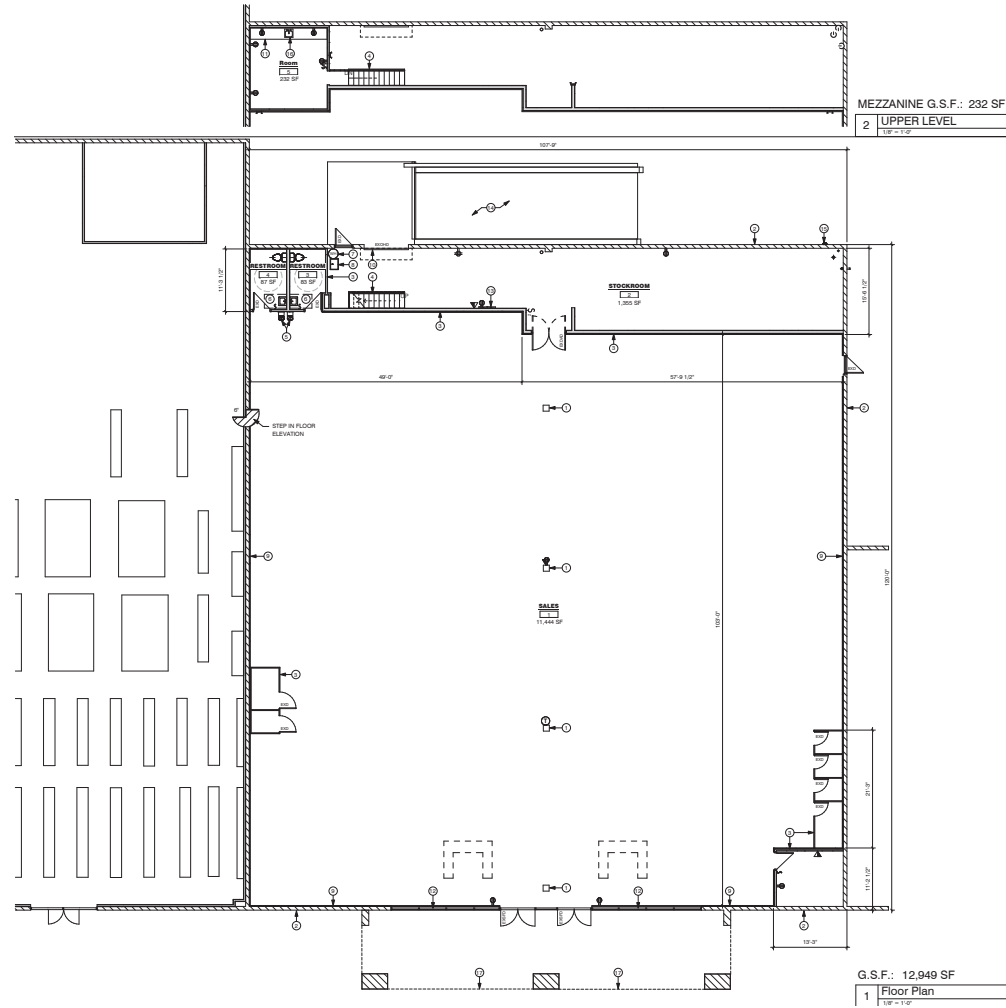
**FOR LEASE**

13,181 SF Jr. Anchor  
Available

34,800 VPD at Intersection

Less Than a 2 Minute Drive  
to Loop 202

Anchor Tenants Include:  
JoAnn's, Goodwill and  
Walgreens



8767 E. Via de Ventura  
Suite 290  
Scottsdale, AZ 85258  
RGcre.com

**JARED LIVELY**

480.214.9411  
Jared@RGcre.com



REIN & GROSSEHME  
COMMERCIAL REAL ESTATE

# BUCKHORN PLAZA

NEC Main St & Recker Rd  
6030 E Main St, Mesa, AZ

## DEMOGRAPHICS

### Population Estimates

1 Mile	11,493
3 Mile	101,133
5 Mile	249,308

### Average Household Income

1 Mile	\$46,211
3 Mile	\$56,361
5 Mile	\$66,602

### Households

1 Mile	5,510
3 Mile	45,059
5 Mile	101,703

The information contained herein has been secured from sources we believe to be reliable, but we make no representations or warranties, expressed or implied, as to the accuracy of the information. References to square footage or age are approximate. Interested parties must verify this information and bear all risk for inaccuracies.



8767 E. Via de Ventura  
Suite 290  
Scottsdale, AZ 85258  
RGcre.com

## JARED LIVELY

480.214.9411  
Jared@RGcre.com



REIN & GROSSOEHME  
COMMERCIAL REAL ESTATE

# BUCKHORN PLAZA

NEC Main St & Recker Rd  
6030 E Main St, Mesa, AZ

## FOR LEASE

1,300 - 13,181 SF Available

34,800 VPD at Intersection

Less Than a 2 Minute Drive  
to Loop 202

Anchor Tenants Include:  
JoAnn's, Goodwill and  
Walgreens



8767 E. Via de Ventura  
Suite 290  
Scottsdale, AZ 85258  
RGcre.com

## JARED LIVELY

480.214.9411  
Jared@RGcre.com