

## BETHANY MARKETPLACE

SWC I-17 & Bethany Home  
2330 W Bethany Home Rd.,  
Phoenix, AZ 85015

### FOR LEASE

2,100 SF Available

Located Adjacent to  
the I-17 Freeway

Anchored by Big Lots

Well Maintained  
Shopping Center

Two Huge Monument  
Signs Available on  
Bethany Home Rd.

Going to Work Side of Traffic

Co-Tenants:



8767 E. Via de Ventura  
Suite 290  
Scottsdale, AZ 85258  
RGcre.com

JARED LIVELY

480.214.9411  
Jared@RGcre.com

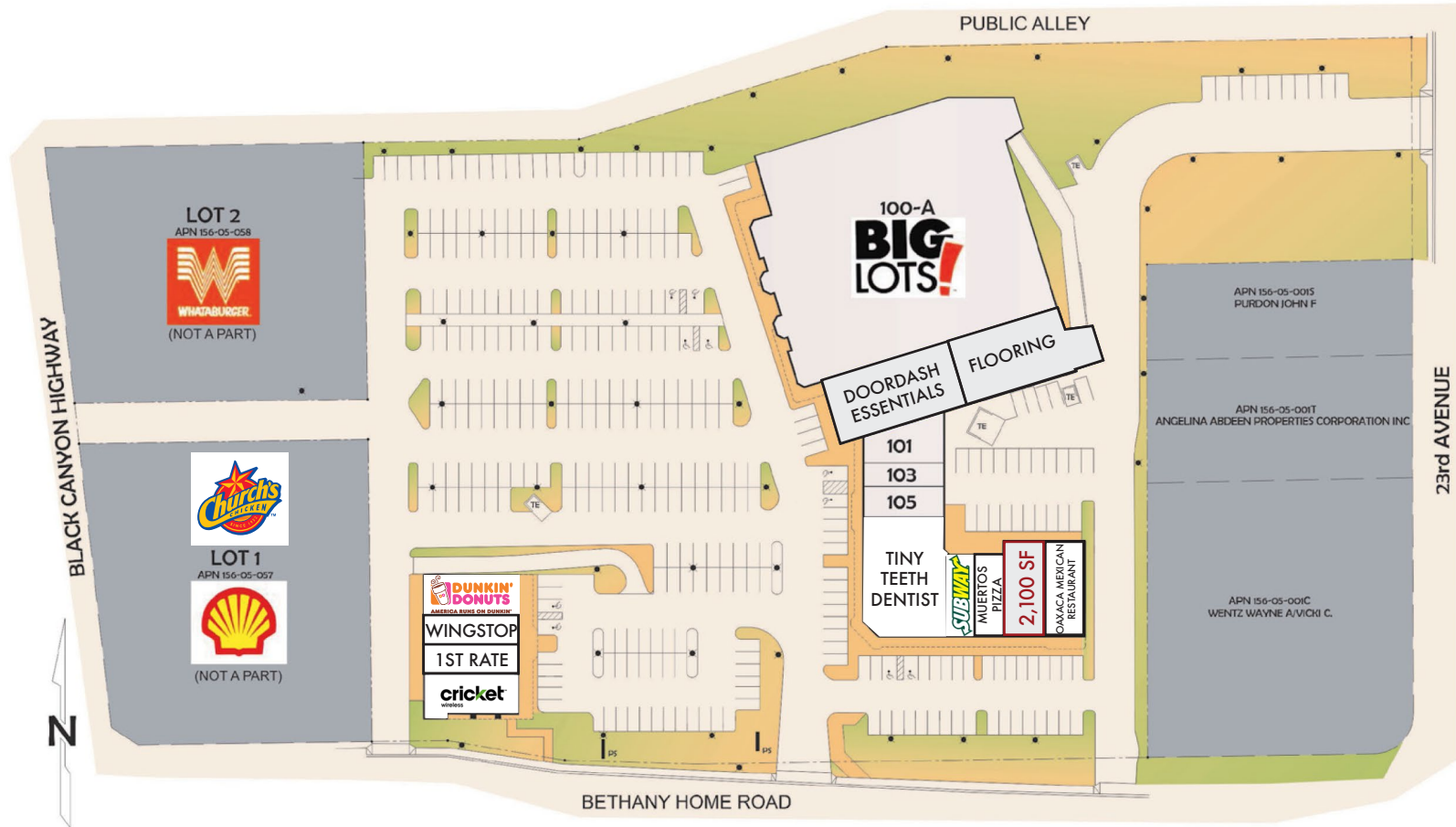
## BETHANY MARKETPLACE

SWC I-17 & Bethany Home  
 2330 W Bethany Home Rd.,  
 Phoenix, AZ 85015

### AVAILABLE SUITES

Suite 117: 2,100 SF  
 Built Out Beauty Salon

The information contained herein has been obtained from sources we believe to be reliable, however, Rein & Grosseohme and its agents have not conducted any investigation regarding these matters and make no warranty or representation expressed or implied regarding the accuracy or completeness of the information. Interested parties need to verify any information that is critical to their decision process and bear all risk for inaccuracies. References to square footage or age are approximate.



8767 E. Via de Ventura  
 Suite 290  
 Scottsdale, AZ 85258  
 RGcre.com

**JARED LIVELY**

480.214.9411  
 Jared@RGcre.com

## BETHANY MARKETPLACE

SWC I-17 & Bethany Home  
2330 W Bethany Home Rd.,  
Phoenix, AZ 85015

### DEMOGRAPHICS (2017)

#### Population Estimates

1 Mile	26,062
3 Mile	207,347
5 Mile	499,249

#### Average Household Income

1 Mile	\$43,477
3 Mile	\$54,481
5 Mile	\$54,768

#### Daytime Employees

1 Mile	5,756
3 Mile	72,620
5 Mile	256,838

### TRAFFIC COUNT (2017)

N. of Bethany Home on I-17	174,789
S. of Bethany Home on I-17	209,389
E. of Bethany Home on I-17	43,936
W. of Bethany Home on I-17	42,649

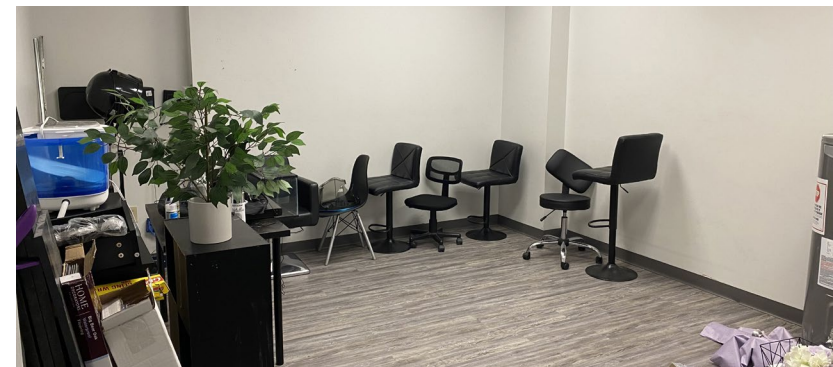


## BETHANY MARKETPLACE

SWC I-17 & Bethany Home  
2330 W Bethany Home Rd.,  
Phoenix, AZ 85015

### FOR LEASE

Suite 117: 2,100 SF  
Built Out Beauty Salon



8767 E. Via de Ventura  
Suite 290  
Scottsdale, AZ 85258  
RGcre.com

**JARED LIVELY**

480.214.9411  
Jared@RGcre.com