

± 1.12 ACRE CONCRETE PAVED CONTRACTOR'S YARD FOR SALE
ZONED A-2 (HEAVY INDUSTRIAL), CITY OF PHOENIX
2347 W Lincoln St, Phoenix, AZ 85009



8767 E. Via de Ventura
Suite 290
Scottsdale, AZ 85258
RGcre.com

MAX SCHUMACHER
480.214.9403
Max@RGcre.com

PATRICK SHEEHAN
480.214.9405
Patrick@RGcre.com

FOR SALE

±1.12 ACRE CONCRETE PAVED CONTRACTOR'S YARD

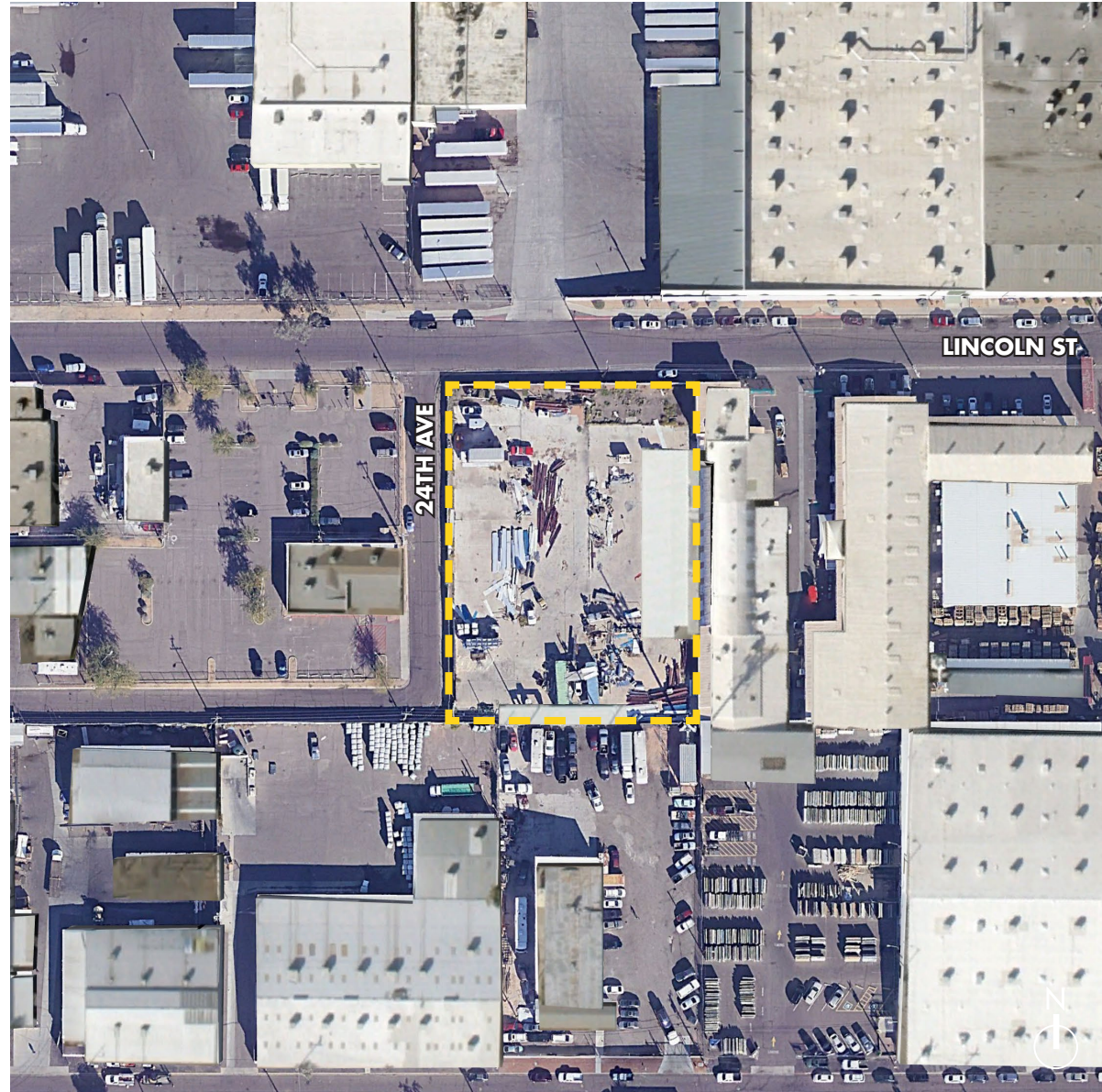
Site Information

2347 W Lincoln St
Phoenix, AZ 85009

FEATURES

- \$950,000
- ±1.12 Acres (±48,938 SF)
- Fully Fenced and Secured with Barbed Wire
- Zoned A-2 (Heavy Industrial), City of Phoenix
- Majority Concrete Paved
- APN: 109-52-009
- ±0.1 Miles to I-17

The information contained herein has been obtained from sources we believe to be reliable, however, Rein & Grosseohme and its agents have not conducted any investigation regarding these matters and make no warranty or representation expressed or implied regarding the accuracy or completeness of the information. Interested parties need to verify any information that is critical to their decision process and bear all risk for inaccuracies. References to square footage or age are approximate.



8767 E. Via de Ventura
Suite 290
Scottsdale, AZ 85258
RGcre.com

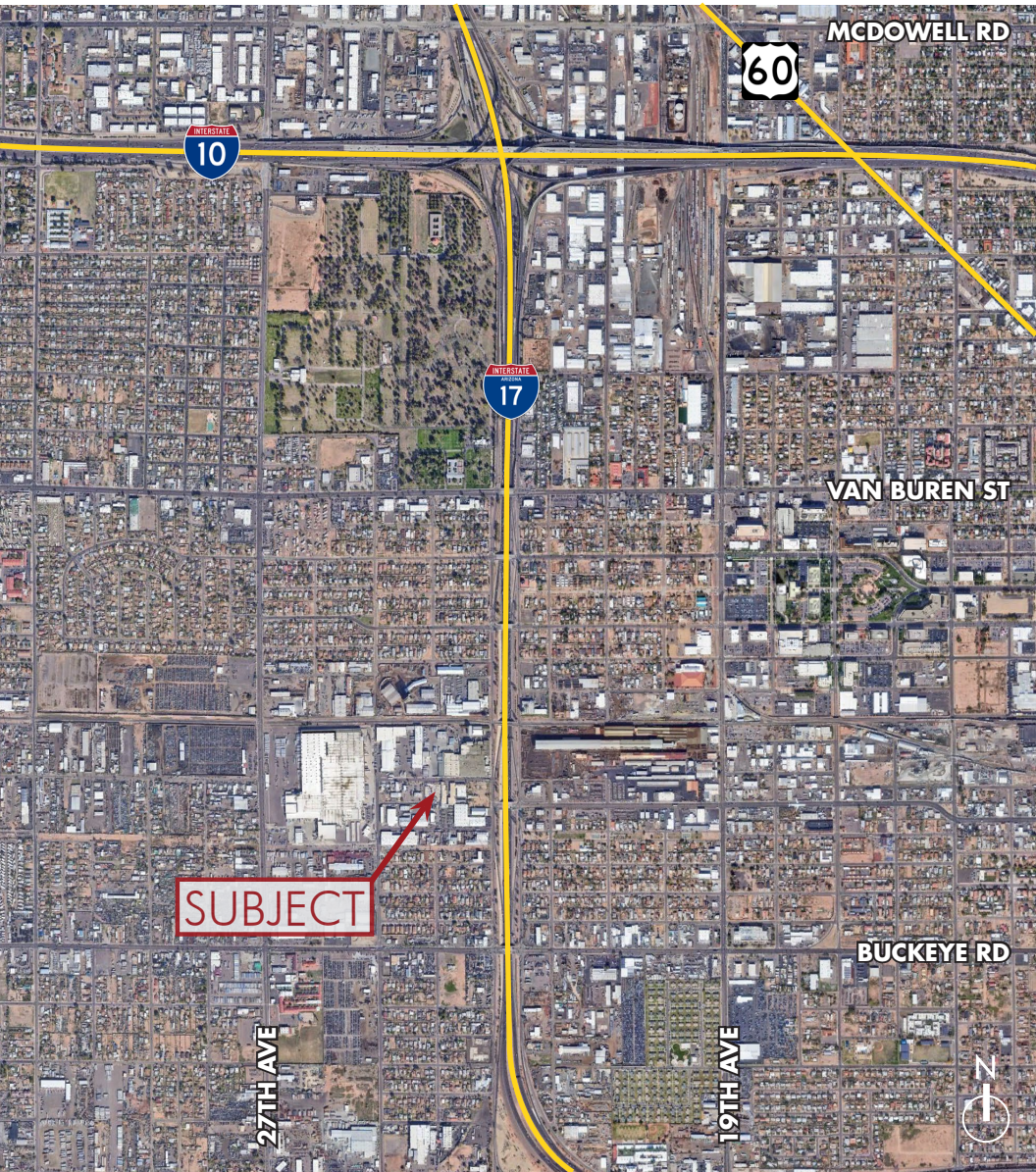
MAX SCHUMACHER
480.214.9403
Max@RGcre.com

PATRICK SHEEHAN
480.214.9405
Patrick@RGcre.com

FOR SALE

±1.12 ACRE CONCRETE PAVED CONTRACTOR'S YARD

Location Maps



8767 E. Via de Ventura
Suite 290
Scottsdale, AZ 85258
RGcre.com

MAX SCHUMACHER
480.214.9403
Max@RGcre.com

PATRICK SHEEHAN
480.214.9405
Patrick@RGcre.com