



**±6,304 SF FREESTANDING INDUSTRIAL BUILDING WITH YARD FOR SALE**  
2926 W Virginia Ave  
Phoenix, AZ 85009

**PART OF FOUR (4) BUILDING PORTFOLIO**  
Buildings can be sold separate or together.  
3 of 4 buildings are contiguous.  
[Click here for more details](#)



8767 E. Via de Ventura  
Suite 290  
Scottsdale, AZ 85258  
RGcre.com

**MAX SCHUMACHER**  
480.214.9403  
Max@RGcre.com

**PATRICK SHEEHAN**  
480.214.9405  
Patrick@RGcre.com



# FOR SALE

±6,304 SF FREESTANDING INDUSTRIAL BUILDING WITH YARD

## Site Information

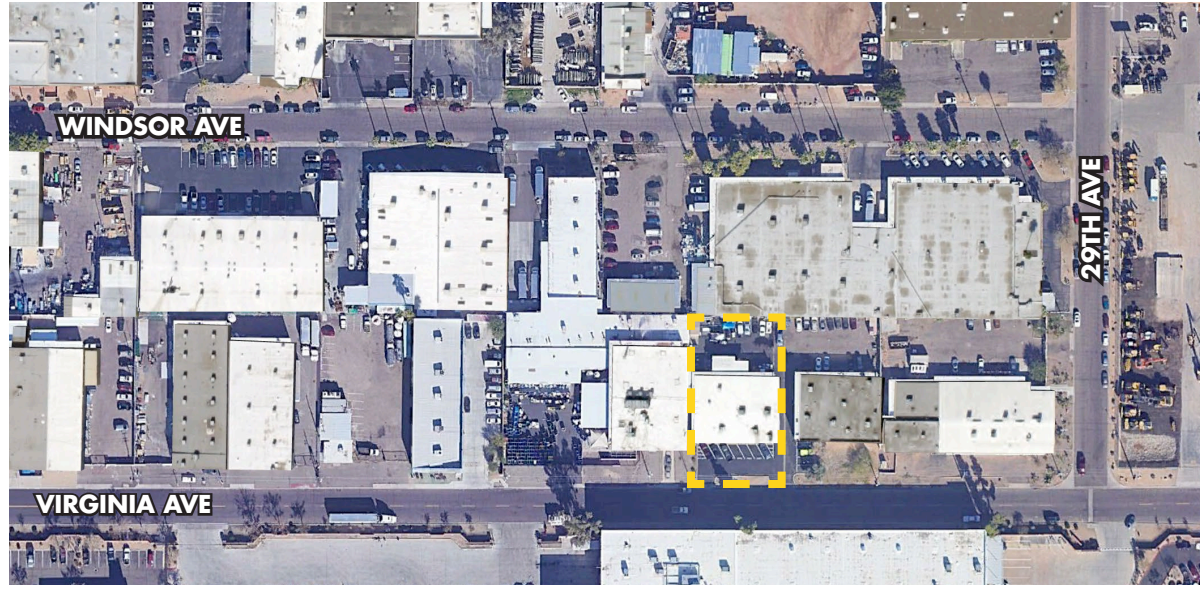
2926 W Virginia Ave

Phoenix, AZ 85009

## FEATURES

- ±6,304 SF
- ±0.4 Acres
- 2 Grade Level Doors
- Fenced and Secured Yard
- 200 Amp 208v Power
- ±25% Office
- Fire Sprinklered
- APN: 108-32-034D
- Partially Air Conditioned Warehouse
- \$999,000 (\$158.50 PSF)

The information contained herein has been obtained from sources we believe to be reliable, however, Rein & Grosseohme and its agents have not conducted any investigation regarding these matters and make no warranty or representation expressed or implied regarding the accuracy or completeness of the information. Interested parties need to verify any information that is critical to their decision process and bear all risk for inaccuracies. References to square footage or age are approximate.



8767 E. Via de Ventura  
Suite 290  
Scottsdale, AZ 85258

RGcre.com

**MAX SCHUMACHER**

480.214.9403  
Max@RGcre.com

**PATRICK SHEEHAN**

480.214.9405  
Patrick@RGcre.com

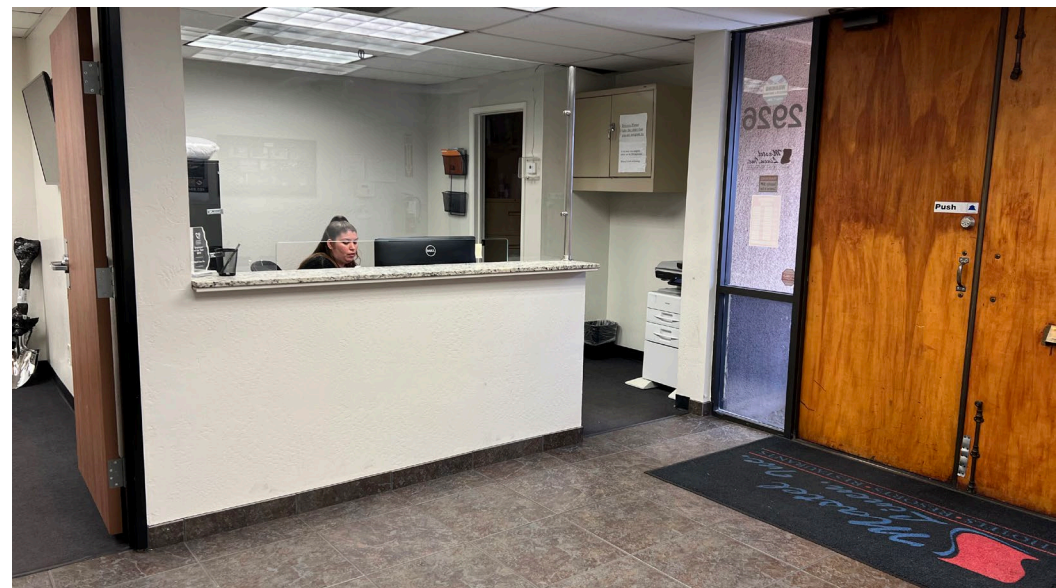


# FOR SALE

±6,304 SF FREESTANDING INDUSTRIAL BUILDING WITH YARD

Property Photos

**R&G**  
REIN & GROSSEHME  
COMMERCIAL REAL ESTATE



8767 E. Via de Ventura  
Suite 290  
Scottsdale, AZ 85258  
RGcre.com

**MAX SCHUMACHER**  
480.214.9403  
Max@RGcre.com

**PATRICK SHEEHAN**  
480.214.9405  
Patrick@RGcre.com

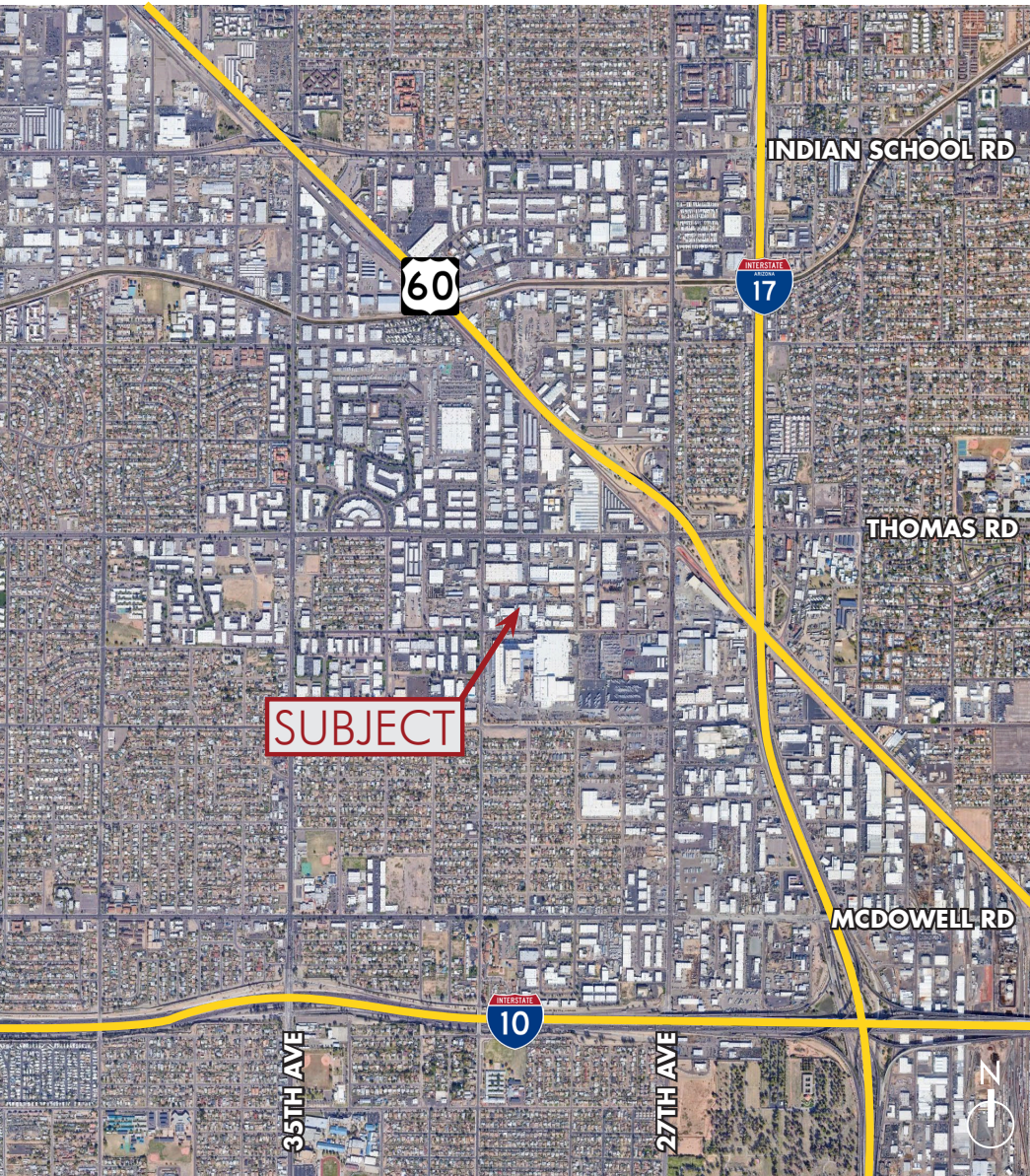


# FOR SALE

±6,304 SF FREESTANDING INDUSTRIAL BUILDING WITH YARD

## Location Maps

**R&G**  
REIN & GROSSEHME  
COMMERCIAL REAL ESTATE



8767 E. Via de Ventura  
Suite 290  
Scottsdale, AZ 85258  
RGcre.com

**MAX SCHUMACHER**

480.214.9403  
Max@RGcre.com

**PATRICK SHEEHAN**

480.214.9405  
Patrick@RGcre.com