



## MONTEREY VISTA VILLAGE

NWC of Pecos & McQueen  
980 E. Pecos Rd., Chandler, AZ

### FOR LEASE

Center Size:  $\pm 90,672$  SF

Prime Location on NWC  
of Pecos Rd & McQueen  
Rd within an Established  
Residential Neighborhood

Easy Access to the San Tan  
Freeway (Loop 202), located  
Just South of the Property

1,447 SF Former Restaurant  
Space Available

Join:



8767 E. Via de Ventura  
Suite 290  
Scottsdale, AZ 85258  
RGcre.com

## JARED LIVELY

480.214.9411  
Jared@RGcre.com



REIN & GROSSEHME  
COMMERCIAL REAL ESTATE

## MONTEREY VISTA VILLAGE

NWC of Pecos & McQueen  
980 E. Pecos Rd., Chandler, AZ



8767 E. Via de Ventura  
Suite 290  
Scottsdale, AZ 85258  
RGcre.com

## JARED LIVELY

480.214.9411  
Jared@RGcre.com



REIN & GROSSEHME  
COMMERCIAL REAL ESTATE

## MONTEREY VISTA VILLAGE

NWC of Pecos & McQueen  
980 E. Pecos Rd., Chandler, AZ

### DEMOGRAPHICS

(2018)

#### Population Estimates

1 Mile	19,214
3 Mile	115,510
5 Mile	301,068

#### Average Household Income

1 Mile	\$86,526
3 Mile	\$94,853
5 Mile	\$103,216

### TRAFFIC COUNT

(2018)

McQueen Rd	27,885
Pecos Rd	17,885

The information contained herein has been secured from sources we believe to be reliable, but we make no representations or warranties, expressed or implied, as to the accuracy of the information. References to square footage or age are approximate. Interested parties must verify this information and bear all risk for inaccuracies.



8767 E. Via de Ventura  
Suite 290  
Scottsdale, AZ 85258  
RGcre.com

JARED LIVELY

480.214.9411  
Jared@RGcre.com



REIN & GROSSEHME  
COMMERCIAL REAL ESTATE

## FOR LEASE

Center Size:  $\pm 90,672$  SF

Prime Location on NWC  
of Pecos Rd & McQueen  
Rd within an Established  
Residential Neighborhood

Easy Access to the San Tan  
Freeway (Loop 202), located  
Just South of the Property

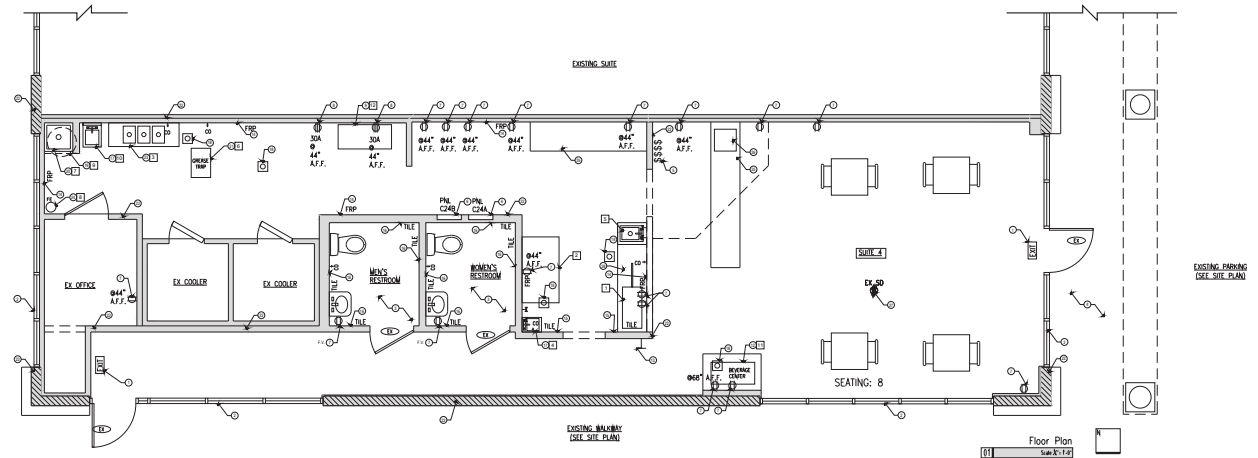
1,447 SF Former Restaurant  
Space Available

Join:



## MONTEREY VISTA VILLAGE

NWC of Pecos & McQueen  
980 E. Pecos Rd., Chandler, AZ



8767 E. Via de Ventura  
Suite 290  
Scottsdale, AZ 85258  
RGcre.com

## JARED LIVELY

480.214.9411  
Jared@RGcre.com